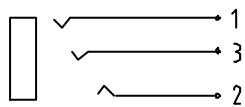
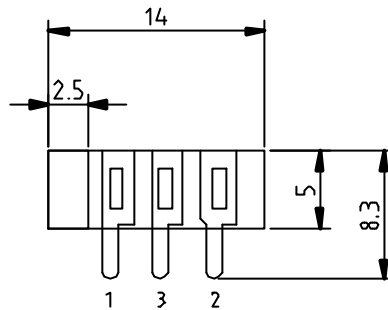
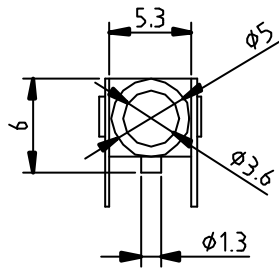
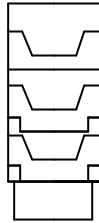
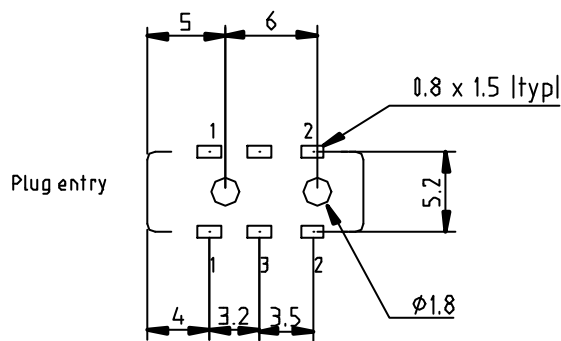


1. Recommended plug: IFPL p/n
2. Mass: 0.7g
3. Provide space behind jack for clearance of debris
4. Jack will mate with standard 3.5mm stereo plug  
Recommended mating plug to IFPL dwg:
5. Supplier: DAU components: p/n TSH-354G




Wiring Detail



Drilling Detail  
View on top side

THE INFORMATION CONTAINED IN THIS DRAWING IS THE PROPERTY OF Inflight Peripherals Limited AND IS SUPPLIED WITHOUT LIABILITY FOR ERRORS OR OMISSIONS. NO PART MAY BE REPRODUCED OR USED EXCEPT AS AUTHORISED BY CONTRACT OR OTHER WRITTEN PERMISSION.

2	3	Terminal	Cu Alloy/silver Plated			
1	1	Connector body	PBT			
Itemref	Quantity	Title/Name, designation, material, dimension etc				
Designed by J.COLE	Checked by CHECKED_BY	Approved by - date	Filename 1050-0-1	Date 6-12-01	Scale 2:1	
 Inflight Peripherals Limited Carlsbrooke Mill, Isle of Wight ENGLAND, PO31 1NS			Audio Jack, Non-Switching, 3.5mm Stereo			
			1050-000-1	Revision A	Sheet 1	